



**India Meteorological Department
Earth System Science Organisation
(Ministry of Earth Sciences)**

BULLETIN NO. : 05 (ARB/01/2020)

TIME OF ISSUE: 1430 HOURS IST

DATED: 30.05.2020

FROM: INDIA METEOROLOGICAL DEPARTMENT (FAX NO. 24643965/24699216/24623220)

TO: CONTROL ROOM, NDM, MINISTRY OF HOME AFFAIRS (FAX.NO. 23092398/23093750)

CONTROL ROOM NDMA (FAX.NO. 26701729)

CABINET SECRETARIAT (FAX.NO.23012284, 23018638)

PS TO HON'BLE MINISTER FOR S & T AND EARTH SCIENCES (FAX NO.23316745)

SECRETARY, MOES, (FAX NO. 24629777)

H.Q. (INTEGRATED DEFENCE STAFF AND CDS) (FAX NO. 23005137/23005147)

DIRECTOR GENERAL, DOORDARSHAN (23385843) DIRECTOR GENERAL, AIR (23421101, 23421105, 23421219)

PIB MOES (FAX NO. 23389042)

UNI (FAX NO. 23355841)

D.G. NATIONAL DISASTER RESPONSE FORCE (NDRF) (FAX NO. 26105912, 2436 3260)

CHIEF SECRETARY, KERALA (FAX NO. 0471-2327176)

ADMINISTRATOR, LAKSHADWEEP ISLANDS (FAX NO. 0413-262184)

ADMINISTRATOR, UNION TERRITORY OF DAMAN & DIU (0260-2230775)

ADMINISTRATOR, UNION TERRITORY OF DADRA NAGAR HAVELI (0260-2230775)

CHIEF SECRETARY, KARNATAKA (FAX NO. 080-22258913)

CHIEF SECRETARY, GOA (FAX NO. 0832-2415201)

CHIEF SECRETARY, MAHARASHTRA (FAX NO. 022- 22028594)

CHIEF SECRETARY, GUJARAT (FAX NO. 079-23250305)

Sub: (1) Depression over south coastal Oman and adjoining Yemen

(2) Likely formation of a Low pressure area over Southeast and adjoining Eastcentral Arabian Sea during next 48 hours

(1) The Depression over south coastal Oman and adjoining Yemen moved slightly southwestwards with a speed of 03 kmph during past six hours and lay centred at 1130 hrs IST of today, the 30th May, 2020 near latitude 17.2°N and longitude 54.1°E, about 20 km north of Salalah (Oman) and 230 km east-northeast of Al-Ghaydah (Yemen). It is very likely to intensify further into a Deep Depression during next 12 hours. It is very likely to move slowly west-southwestwards along south Oman & Yemen coasts.

Forecast track and intensity are given in the following table:

Date/Time(IST)	Position (Lat. °N/ long. °E)	Maximum sustained surface wind speed (Kmph)	Category of cyclonic disturbance
30.05.20/1130	17.2/54.1	40-50 gusting to 60	Depression
30.05.20/1730	17.0/53.8	50-60 gusting to 70	Deep Depression
31.05.20/0530	16.9/53.5	50-60 gusting to 70	Deep Depression
31.05.20/1730	16.8/53.2	50-60 gusting to 70	Deep Depression
01.06.20/0530	16.7/52.8	40-50 gusting to 60	Depression

(2) Another low pressure area is very likely to form over Southeast & adjoining Eastcentral Arabian Sea during next 48 hours and concentrate into a Depression over Eastcentral and adjoining Southeast Arabian Sea during subsequent 48 hours and likely to intensify further. It is very likely to move north-northwestwards towards Gujarat & adjoining north Maharashtra coasts during next 4-5 days.

Warnings:

(i) Rainfall:

- No adverse weather is likely over the Indian land areas, with the first system, as it is located over south coastal Oman and is expected to move over coastal areas of Oman and Yemen during next 48 hours and dissipate there.

Spatial rainfall distribution: Isolated: <25%, A few: 26-50%, Many: 51-75%, Most: 76-100%

Rainfall amount (mm): Heavy rain: 64.5 – 115.5, Very heavy rain: 115.6 – 204.4, Extremely heavy rain: 204.5 or more.

(ii) Wind warning

Squally wind, speed reaching 45-55 kmph gusting to 65 kmph, very likely to prevail over westcentral Arabian Sea along & off South Oman – Yemen coasts during next 48 hours.

(iii) Sea condition

The sea condition is very likely to be rough to very rough over westcentral Arabian Sea along & off South Oman – Yemen coasts during next 48 hours.

(iv) Fishermen Warning

- The fishermen are advised not to venture into Westcentral Arabian Sea along & off South Oman – Yemen coasts during next 48 hours.
- In view of the likely development of the second low pressure system over southeast & adjoining east-central Arabian Sea, Fishermen are advised not to venture into southeast and adjoining eastcentral Arabian Sea from 31st May, until further advisories.

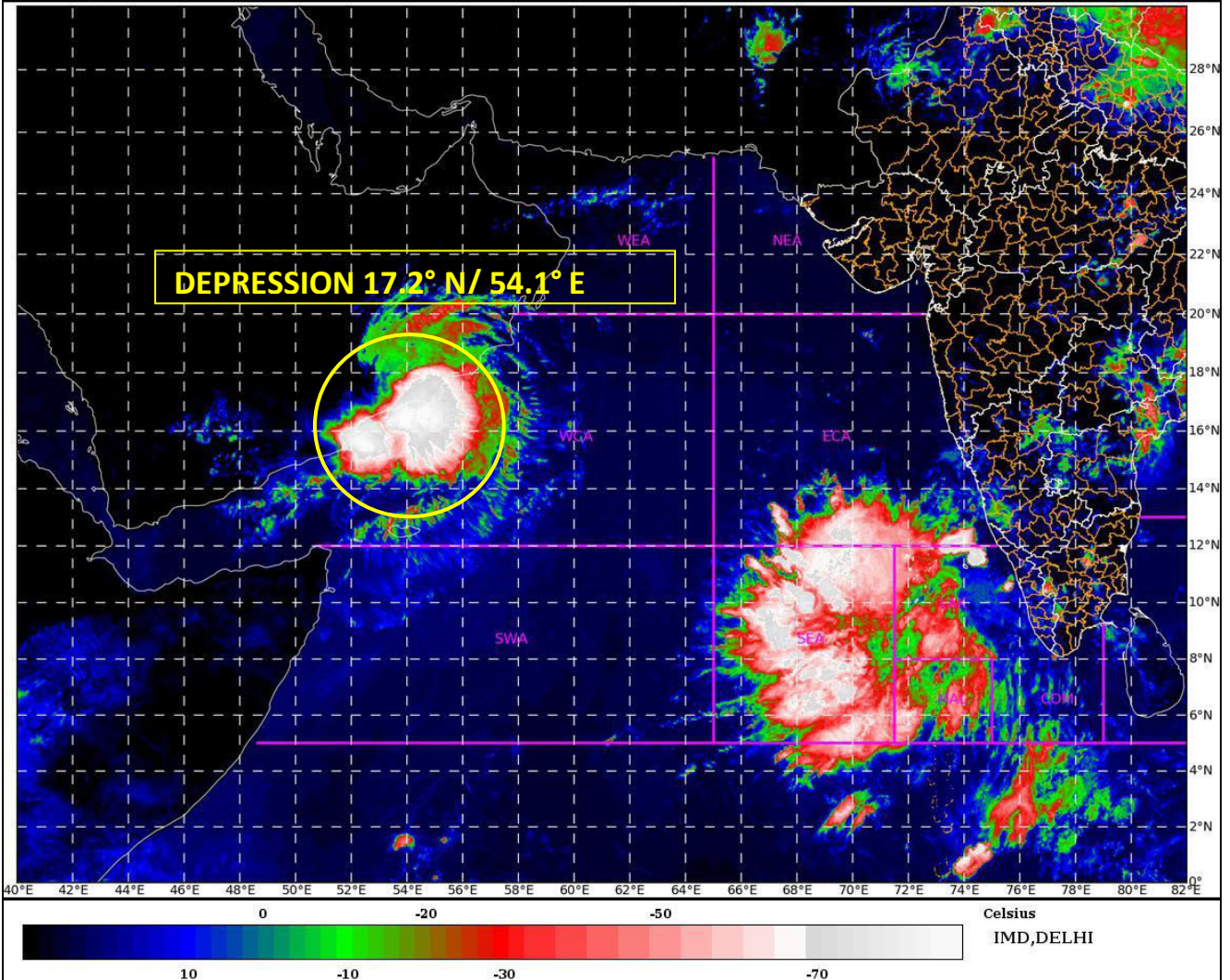
The next bulletin will be issued at 2030 hrs IST of 30th May, 2020.

(Sunitha Devi. S)
Scientist-E, RSMC, New Delhi

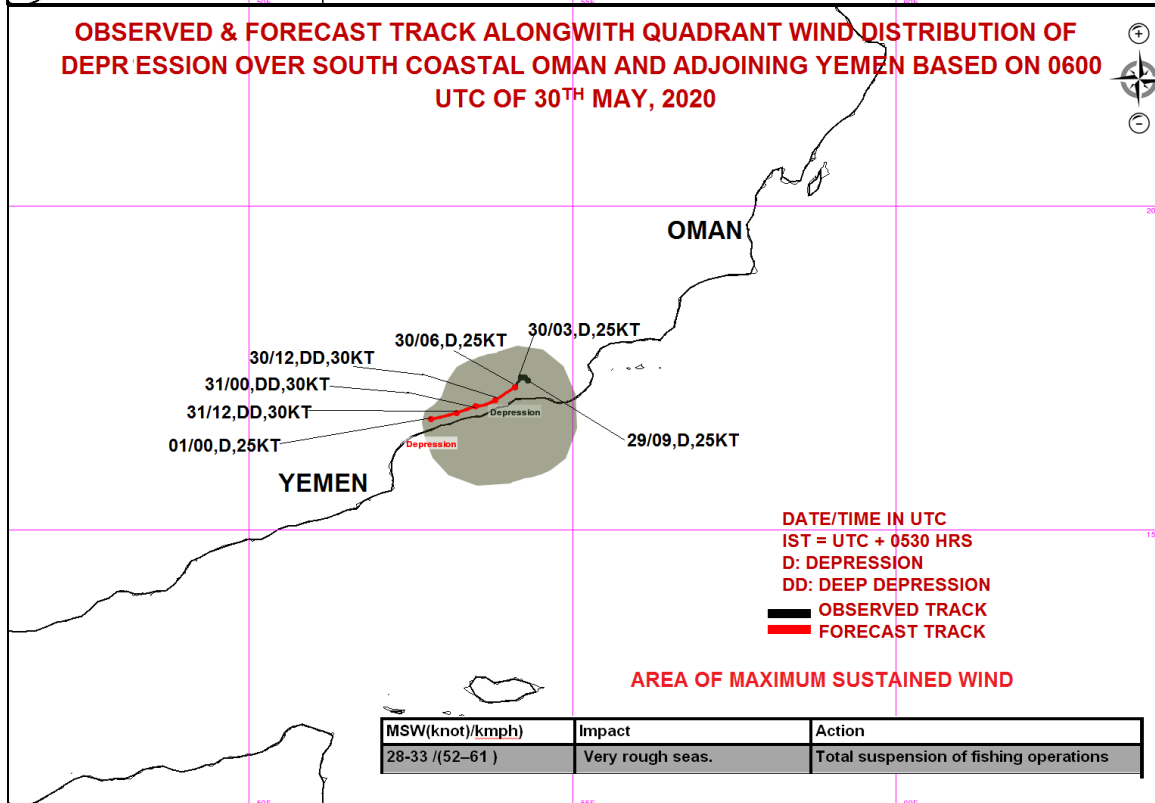
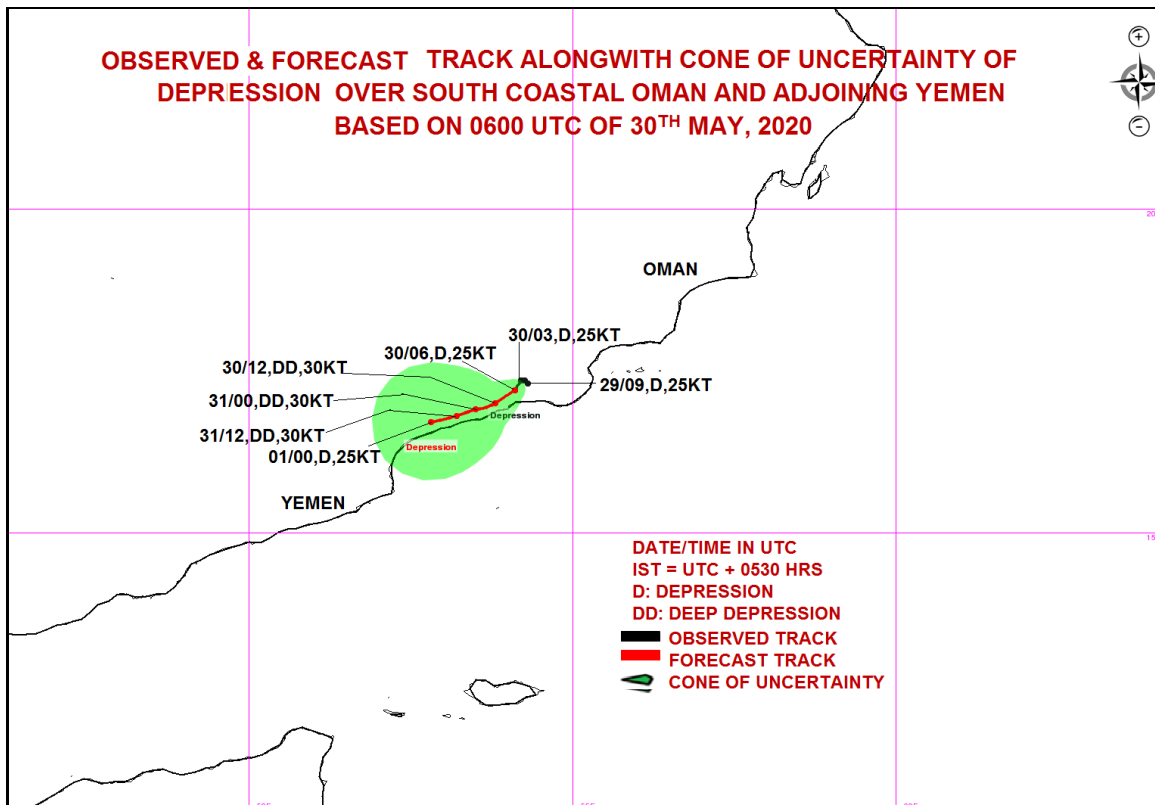
Copy to: ACWC Chennai/ ACWC Mumbai/ MC Goa/ MC Bengaluru/ CWC Ahmedabad/ Thiruvananthapuram.

SAT : INSAT-3DR IMG
IMG_TIR1_TEMP 10.8 um
ARABIAN_SEA

30-05-2020/(0815 to 0841) GMT
30-05-2020/(1345 to 1411) IST



Spatial rainfall distribution: Isolated: <25%, A few: 26-50%, Many: 51-75%, Most: 76-100%
Rainfall amount (mm): Heavy rain: 64.5 – 115.5, Very heavy rain: 115.6 – 204.4, Extremely heavy rain: 204.5 or more.



Spatial rainfall distribution: Isolated: <25%, A few: 26-50%, Many: 51-75%, Most: 76-100%
 Rainfall amount (mm): Heavy rain: 64.5 – 115.5, Very heavy rain: 115.6 – 204.4, Extremely heavy rain: 204.5 or more.